



**SIMSON
MAXWELL**

A Presentation for the 2017 PPIUDC



**SIMSON
MAXWELL**

Power Generation and Industrial Engines



SIMSON
MAXWELL

Agenda

- **Company Overview**
 - **History**
 - Who We are Today
 - Business Segments
- Packaging Services and Assembly
- Product Support Capabilities





**SIMSON
MAXWELL**

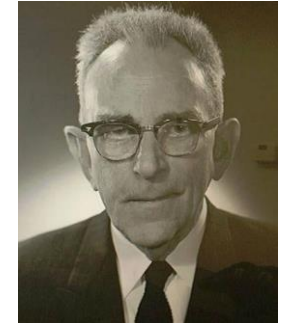
History

1941

Joe Simson and Bob Maxwell establish Simson Maxwell in Vancouver, BC, as a marine engine service and supply company

1951

Prince George Branch is opened



1957

Edmonton Branch is opened

1958

Calgary Branch is opened

1983

Port Coquitlam Production Facility Established



Power Generation and Industrial Engines



**SIMSON
MAXWELL**

History Cont.

1983

Production Facility CSA Accredited

1987

Nanaimo Branch Established

2001

Simson Maxwell acquired by the current ownership group

2004

Head Office relocated to Edmonton

2012

Calgary Packaging Services Facility established

2015

Terrace Branch Established

2016

Simson Maxwell celebrates 75 years!



Power Generation and Industrial Engines



SIMSON
MAXWELL

Agenda

- **Company Overview**
 - History
 - **Who We are Today**
 - Business Segments
- Packaging Services and Assembly
- Product Support Capabilities





SIMSON
MAXWELL

Who We Are Today

Vision Statement

To be the premier supplier of Power Generation and Industrial Engine products and Customer Service in the markets we serve.

- Custom Engineered to order Power Generation and Industrial Engine Company
- Customer list currently at 6,000 and growing
- Safety Focused
- COR (Certificate of Recognition) Certified Safety Program
- Give back to the communities in which we live and work
 - Habitat for Humanity
 - Tour of Alberta
 - Local staff endorsed organizations
 - Prostate Cancer Awareness

Power Generation and Industrial Engines



SIMSON
MAXWELL

Who We Are Today

Currently we are operating in the following market segments:

- Construction
- Agriculture
- Property Management
- Aquaculture
- Compression
- Hard Rock Drilling
- Government
- Forestry
- Conventional Mining
- Coast Guard
- Hydro
- Pumping
- Conventional Oil and Gas
- Infrastructure
- Remote Communities
- Oil Sands Mining
- Data Centers
- Mid-Stream Gas
- Rock Crushing
- Rental Houses
- Telecommunications

Power Generation and Industrial Engines



**SIMSON
MAXWELL**

Current Locations

Eight Facilities Across Western Canada

- Port Coquitlam
 - Branch
 - Production Plant
- Prince George
- Nanaimo
- Edmonton (head office)
- Calgary
 - Branch
 - Packaging Services
- Terrace
- Kamloops (satellite)
- Fort St. John (satellite)
- Fort McMurray (satellite)



Power Generation and Industrial Engines



**SIMSON
MAXWELL**



Engineering

- Four members of our Engineering Group
 - 1 Electrical Engineers
 - 1 Mechanical Engineers
 - 1 Electrical Drafts Person
 - 1 Mechanical Drafts Person



- Design of Diesel Power Gensets from 5 – 3250KW
- Design of Gas Power Gensets from 15 – 1500KW
- Simmax Bi-fuel Design and Application
- Design of all SIMMAX Control Systems and Switchgear



Power Generation and Industrial Engines



**SIMSON
MAXWELL**

Power Generation Sales

- Eight Power Generation Sales Representatives, lead by a General Manager Power Systems
- Both Standby and Prime Power Focus and Expertise
- Full Fleet of Sales Trucks
- Dedicated Marketing Manager
- Simmax Generators Diesel and Gaseous (6.5 – 3250KW)
- Simmax Enclosed Generators (Standby and Rental)

SIMMAX



Power Generation and Industrial Engines



**SIMSON
MAXWELL**

Electrical Controls & Switchgear

SIMMAX Switchgear

- Custom switchgear solution
- Voltage range to 4160Volts
- On-line and remote monitoring capability
- CSA certified & NRTL approved
- Flexible Breaker selection – i.e. Schneider, Cutler, consultants choice
- Retro-fits available

SIMMAX



Power Generation and Industrial Engines



SIMSON
MAXWELL

SIMMAX Bi-Fuel Systems

- Fully automatic modulating solution
- Fully independent / stand alone control system
- 100% diesel operation is always available
- Does not interfere with the operation of original equipment
- Retro-fits are available to existing diesel generator sets
- Greener Energy – emissions reductions
- Approx. 70% fuel substitution rate with Natural Gas
- Approx. 30% Fuel substitution rate with Propane
- No derate implication on engine power



**SIMSON
MAXWELL**

Simmax Bi-Fuel Systems

Safely converts
diesel engines
to operate on
up to 70%
gaseous fuel

- Substantial reduction
in diesel consumption
- Lower emissions
- Best in Class **ComAp**
engine protection

SIMSON-MAXWELL.COM
1-800-374-6766 sales@simmax.com

• Edmonton • Prince George • Calgary • Nanaimo • Port Coquitlam • Vernon

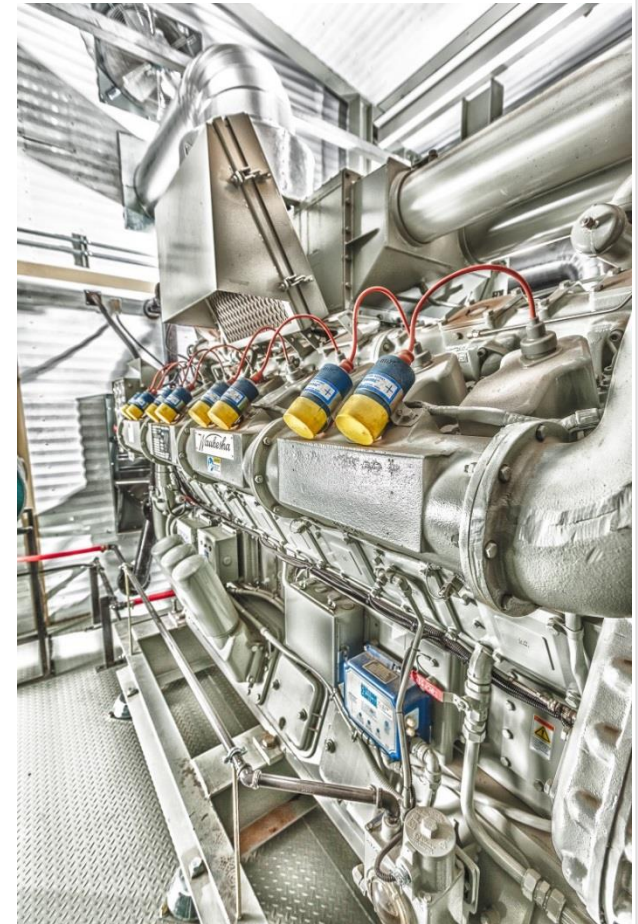
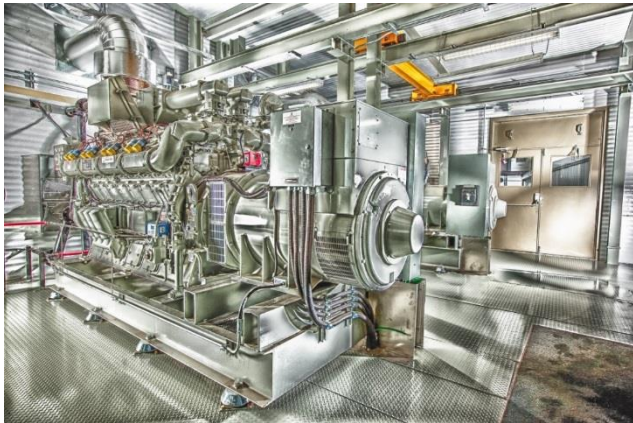
Power Generation and Industrial Engines



**SIMSON
MAXWELL**

Custom Power Generation Building Packages

- Diesel Power Generation Building Packages ranging from 5 – 3250KW
- Gaseous Power Generation Building Packages ranging from 15 – 1500KW
- Simmax Cogeneration Packages



Power Generation and Industrial Engines



SIMSON
MAXWELL

Product Lines

- Power Generation

SIMMAX

- Electrical Controls, Switchgear & Bi-Fuel

SIMMAX



ComAp LLC

SIMMAX
Bi-Fuel  Systems

- Industrial Engines



VOLVO PENTA



 **Perkins**

Power Generation and Industrial Engines



SIMSON
MAXWELL

Agenda

- **Company Overview**
 - History
 - Who We are Today
 - Business Segments
- **Packaging Services and Assembly**
- Product Support Capabilities





**SIMSON
MAXWELL**

Packaging Services



- Simson Maxwell's latest addition
- 4.55 Acres
- 12 Staff Members
- Custom Power Packages fabrication and testing



Power Generation and Industrial Engines



**SIMSON
MAXWELL**

Packaging Services



Power Generation and Industrial Engines



SIMSON
MAXWELL



Production

- 15 Staff Members
- 35,000 Square Feet
- Over 50 Years Experience
- CSA Accredited
- COR Certified
- Industrial Engine Sales Completion
- Generator Set Assembly and Testing
- Controls and Switchgear Manufacturing

Power Generation and Industrial Engines



**SIMSON
MAXWELL**

Production
Facility

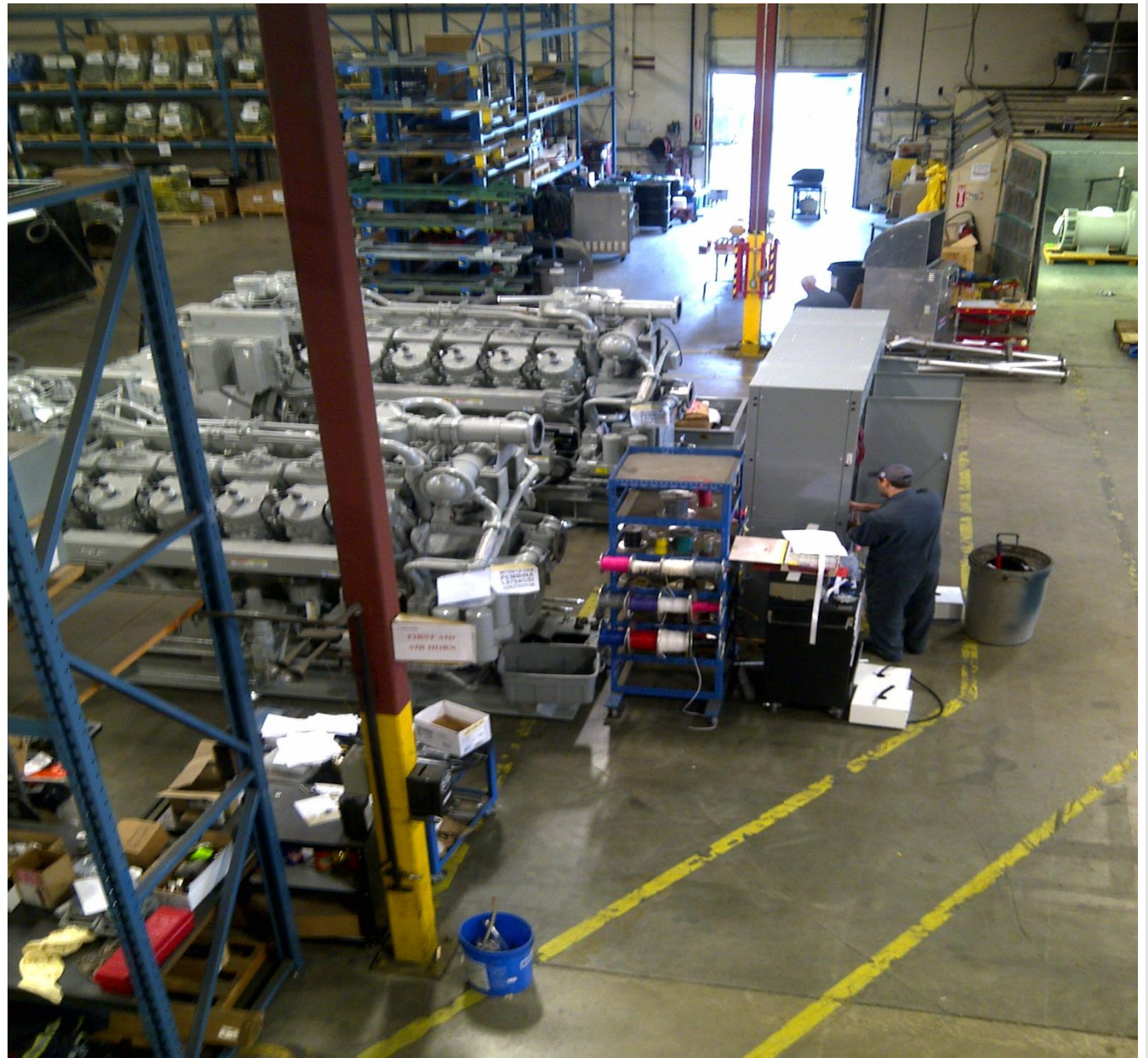


Power Generation and Industrial Engines



**SIMSON
MAXWELL**

Production
Facility



Power Generation and Industrial Engines



SIMSON
MAXWELL

Agenda

- **Company Overview**
 - History
 - Who We are Today
 - Business Segments
- Packaging Services and Assembly
- Product Support Capabilities





SIMSON
MAXWELL

Agenda

- **Company Overview**
 - History
 - Who We are Today
 - Business Segments
- Packaging Services and Assembly
- **Product Support Capabilities**





**SIMSON
MAXWELL**

Product Support: Service

- Employ the most skilled and dedicated service technicians in the industry
- ASTT Certified
- Currently over 50 Service Technicians
- Over 35 Service Vehicles in our Fleet
- Safety Focused, COR Certified
- Rebuild, Field Service, In Shop Repair, Planned Maintenance Capabilities in all Locations
- 24 Hours Service Support
- Over 4,000 Planned Maintenance Contracts in Western Canada.
- Full Coverage of Western Canada
- Latest tools and equipment



Power Generation and Industrial Engines



**SIMSON
MAXWELL**

Product Support: Parts



- 24 Hour Parts Support
- 14 Trained Parts Staff
- Fully qualified to support our current product lines
- Impressive inventory levels to ensure our product support commitment.



Power Generation and Industrial Engines